



# AIR RESOURCE

## AMBIENT AIR MONITORING SHELTER

PROJECT # 25-6459  
SITE NAME: YOSEMITE

DATE: 3/10/2025  
REV: B

### DRAWING / SUBMITTAL REVIEW

☐ APPROVED

☐ APPROVED WITH CHANGES NOTED

☐ REVISE AND RESUBMIT

☐ REJECTED

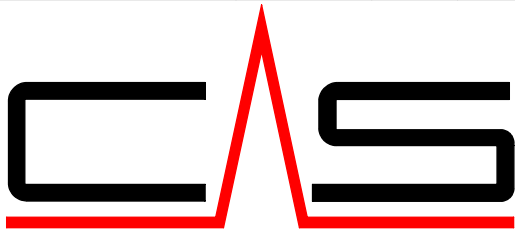
SUBMITTAL WAS REVIEWED FOR DESIGN CONFORMITY INCLUDING LAYOUT AND COMPONENT SELECTION

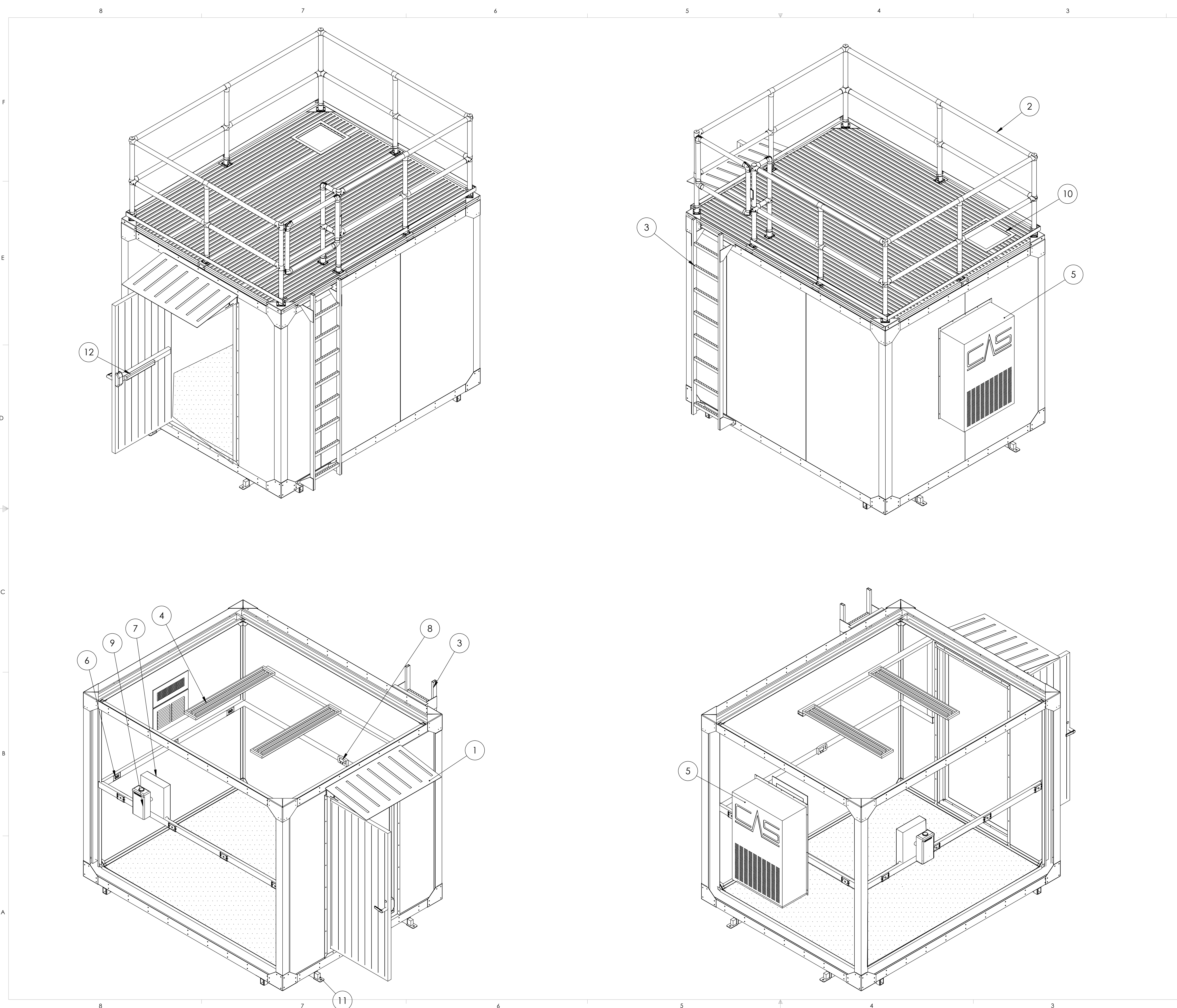
BY: \_\_\_\_\_ DATE: \_\_\_\_\_

REVISIONS		
REV.	DESCRIPTION	DATE
A	ADDED BASE INFORMATION	2/26/2025
B	CHANGED LOAD CENTER LOCATION	3/10/2025

PROJECT NOTES:	
1	18" INLET PASSTHROUGH FOR BAM1020
2	ALUMINUM DECK/LADDER / SHIPS LOOSE
3	MANUFACTURER TO ADAPT BASE FOR HELICOPTER LIFTING

**PROPRIETARY AND CONFIDENTIAL:** THE INFORMATION CONTAINED IN THIS DRAWING IS THE SOLE PROPERTY OF CAS INC. ANY REPRODUCTION IN PART OR AS A WHOLE WITHOUT THE WRITTEN PERMISSION OF CAS INC. IS PROHIBITED.

STOCK SIZE: 10x8		NAME	DATE	CONSOLIDATED ANALYTICAL SYSTEMS		2629 Spring Grove ave, Cincinnati, OH 45214
	DRAWN	RTL	2/13/2025	TITLE: YOSEMITE		
	P.M.			AIR RESOURCE		
	MPNG.					
	ENG.			AMBIENT AIR MONITORING SHELTER		
 CONSOLIDATED ANALYTICAL SYSTEMS		SIZE	DWG. NO.		REV	
		D	25-6459		B	
		SCALE: 1:24	WEIGHT:		SHEET 1 OF 5	

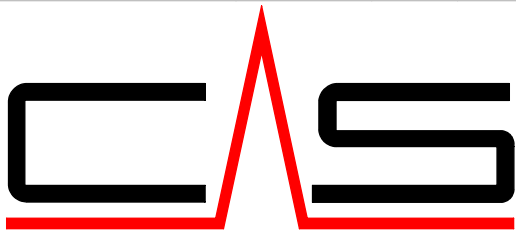


ITEM NO.	PART NUMBER	DESCRIPTION	
1	SW-01-002	ALUMINUM DOOR W/AWNING	1
2	9000-RL-8X10	8x10 ALUMINUM MODULAR ROOF RAILING SYSTEM	1
3	SW-05-005	ALUMINUM VERTICAL LADDER	1
4	EL-LIGHT	48IN LED LIGHT FIXTURE W/LED BULBS	2
5	9001-HVAC	HVAC-1 TON W/3Kw HEATER	1
6	EL-3043BE	120V 20A DUPLEX RECEPTACLE	7
7	9001:LC	120/240V 100A 1PH LOAD CENTER	1
8	9001:THERMOSTAT	THERMOSTAT	1
9	9001:DISCONNECT	100A 120/240V DISCONNECT	1
10	RF-INLET 18x18	18x18 ROOF INLET PLATE	1
11	9001:TD	BASE TIE DOWN	4
12	SW-01-003.02 (PUSHBAR)	PUSHBAR EXIT DEVICE	1

**PROPRIETARY AND CONFIDENTIAL:** THE INFORMATION CONTAINED IN THIS DRAWING IS THE SOLE PROPERTY OF CAS INC. ANY REPRODUCTION IN PART OR AS A WHOLE WITHOUT THE WRITTEN PERMISSION OF CAS INC. IS PROHIBITED.

STOCK SIZE: 10x8

NAME	DATE	CONSOLIDATED ANALYTICAL SYSTEMS		2629 Spring Grove ave, Cincinnati, OH 45214	
DRAWN	RTL	2/13/2025	TITLE:		YOSEMITE
P.M.					
MFG.					
ENG.					



CONSOLIDATED ANALYTICAL SYSTEMS

SIZE

D

DWG. NO.

25-6459

REV

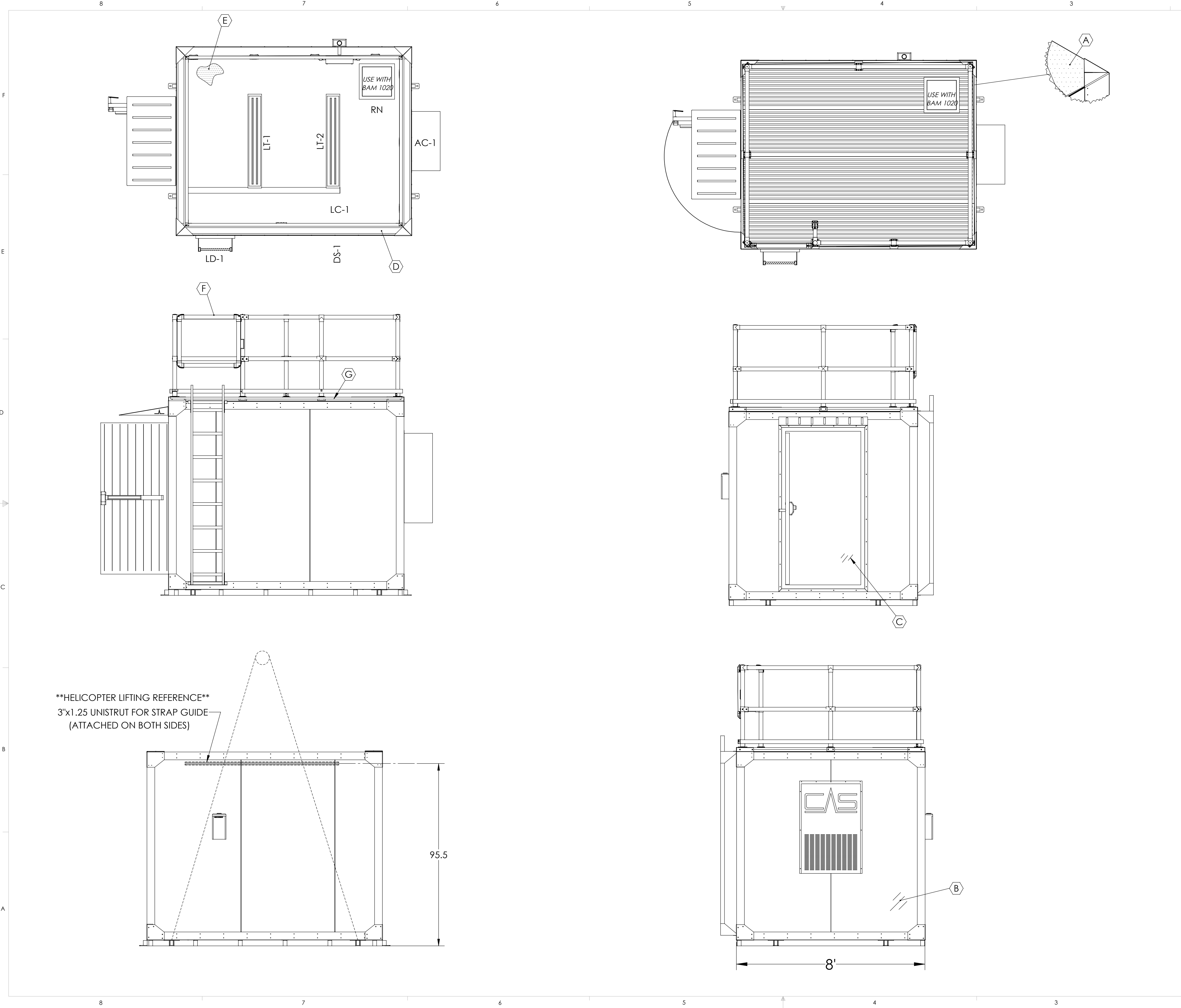
B

SCALE: 1:24

WEIGHT:

SHEET 2 OF 5






TAG LEGEND		
TAG	DESCRIPTION	QTY
AC	HVAC SYSTEM	1
DS	100A 120/240V DISCONNECT	1
LC	100A 120/240V LOAD CENTER	1
LT	48" LIGHT FIXTURE	2
LD	VERTICAL LADDER	1
RN	ROOF INLET (BAM1020)	1

A	RUBBER MEMBRANE ROOFING
B	ALUMINUM SKIN: IVORY
C	INTERIOR FRP: WHITE
D	R25 INSULATED WALLS/CEILING
E	SEAMLESS VINYL FLOORING
F	SAFETY GATE
G	DECK STOP PLATE

**PROPRIETARY AND CONFIDENTIAL:** THE INFORMATION CONTAINED IN THIS DRAWING IS THE SOLE PROPERTY OF CAS INC. ANY REPRODUCTION IN PART OR AS A WHOLE WITHOUT THE WRITTEN PERMISSION OF CAS INC. IS PROHIBITED.

STOCK SIZE: 10x8

DRAWN P.J.M. MFG. ENG.	NAME RTL DATE 2/13/2025	CONSOLIDATED ANALYTICAL SYSTEMS 2629 Spring Grove ave, Cincinnati, OH 45214	
TITLE: YOSEMITE		REV B	
SCALE: 1:24		WEIGHT:	SHEET 3 OF 5

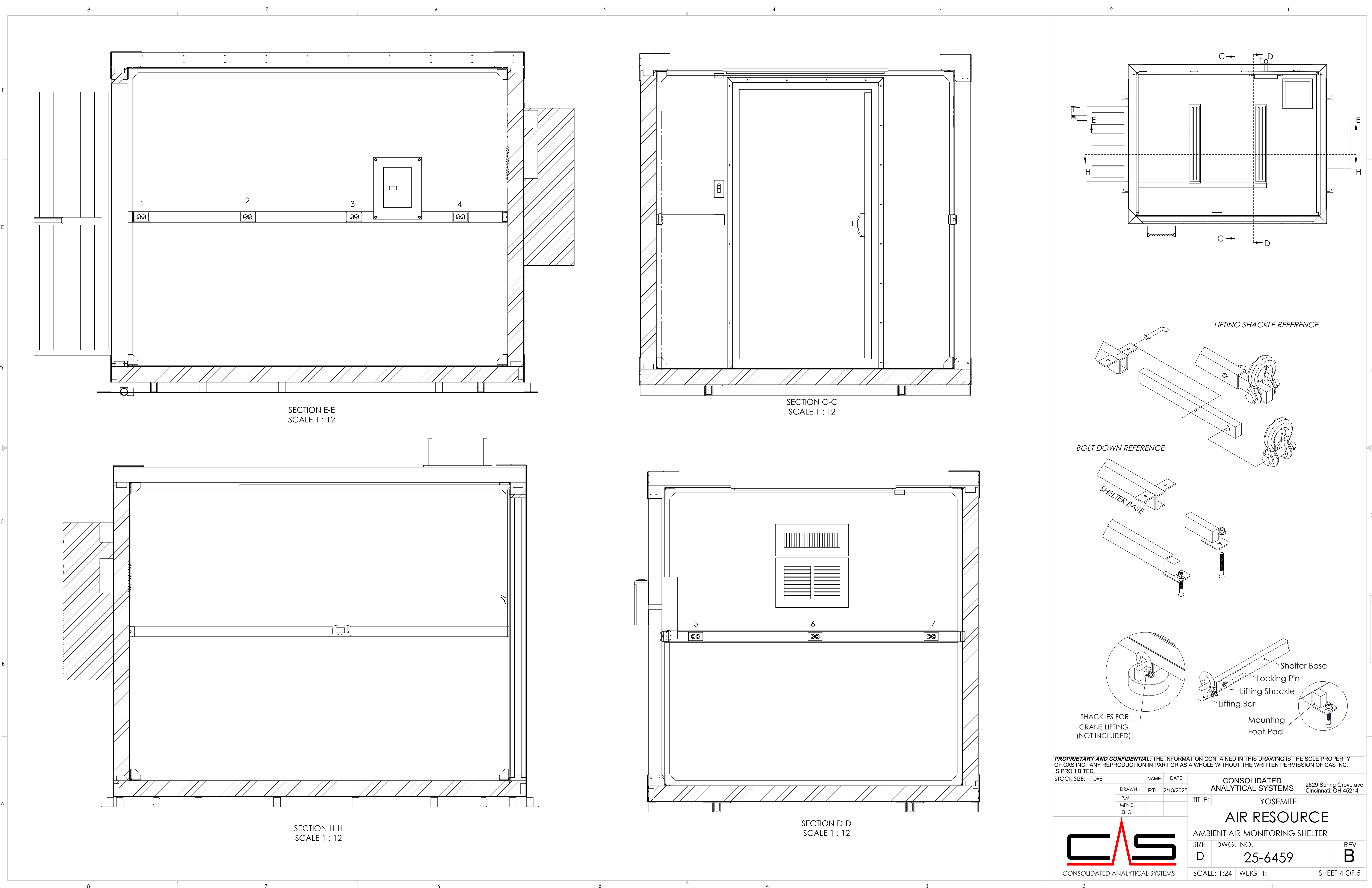


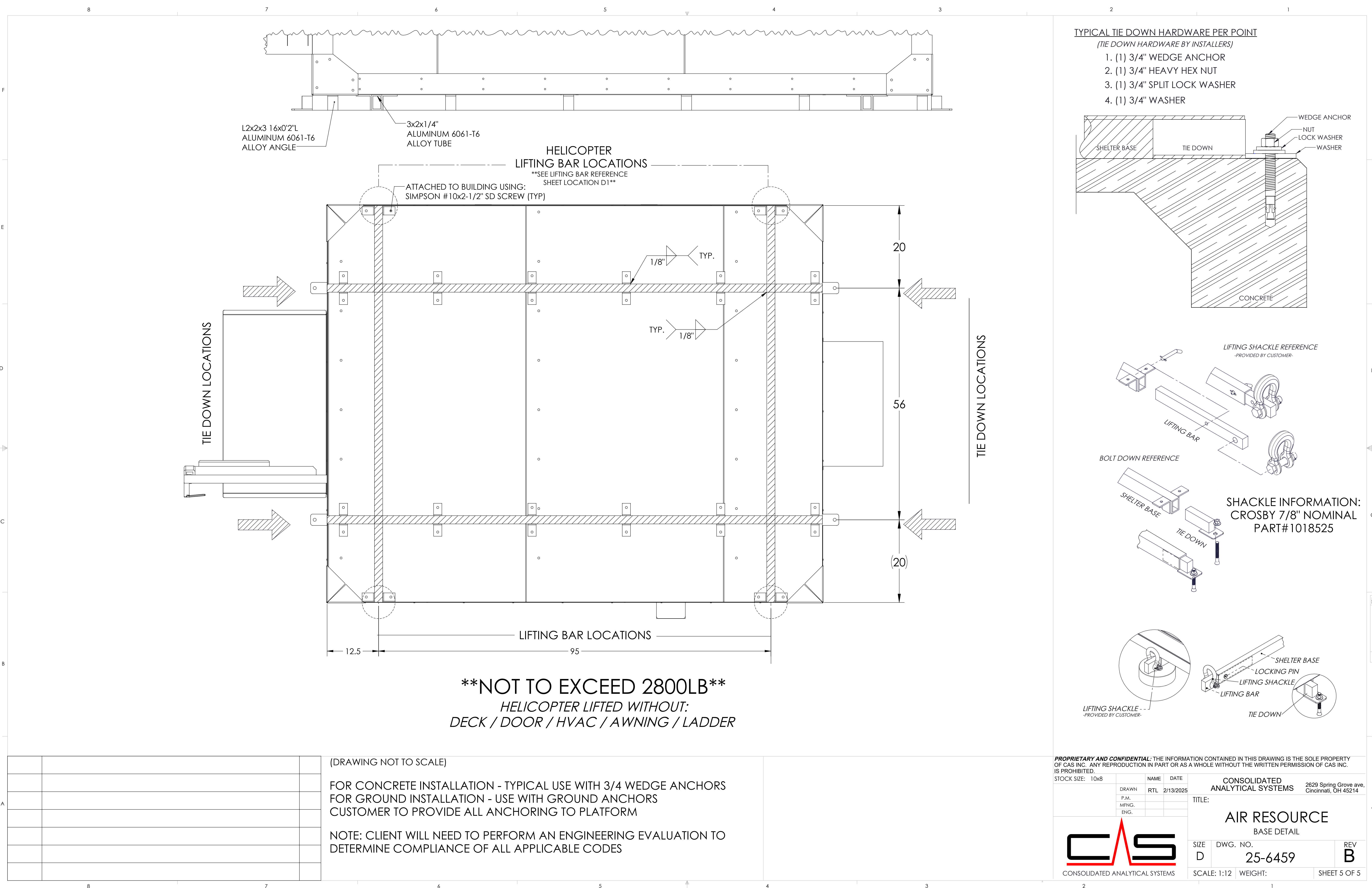
CONSOLIDATED ANALYTICAL SYSTEMS

**AIR RESOURCE**

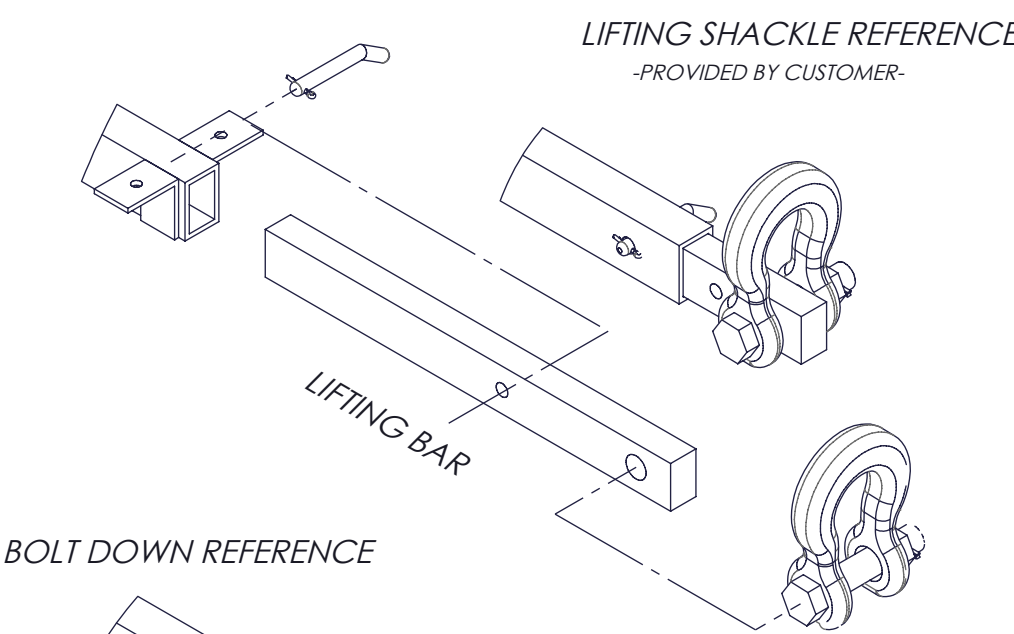
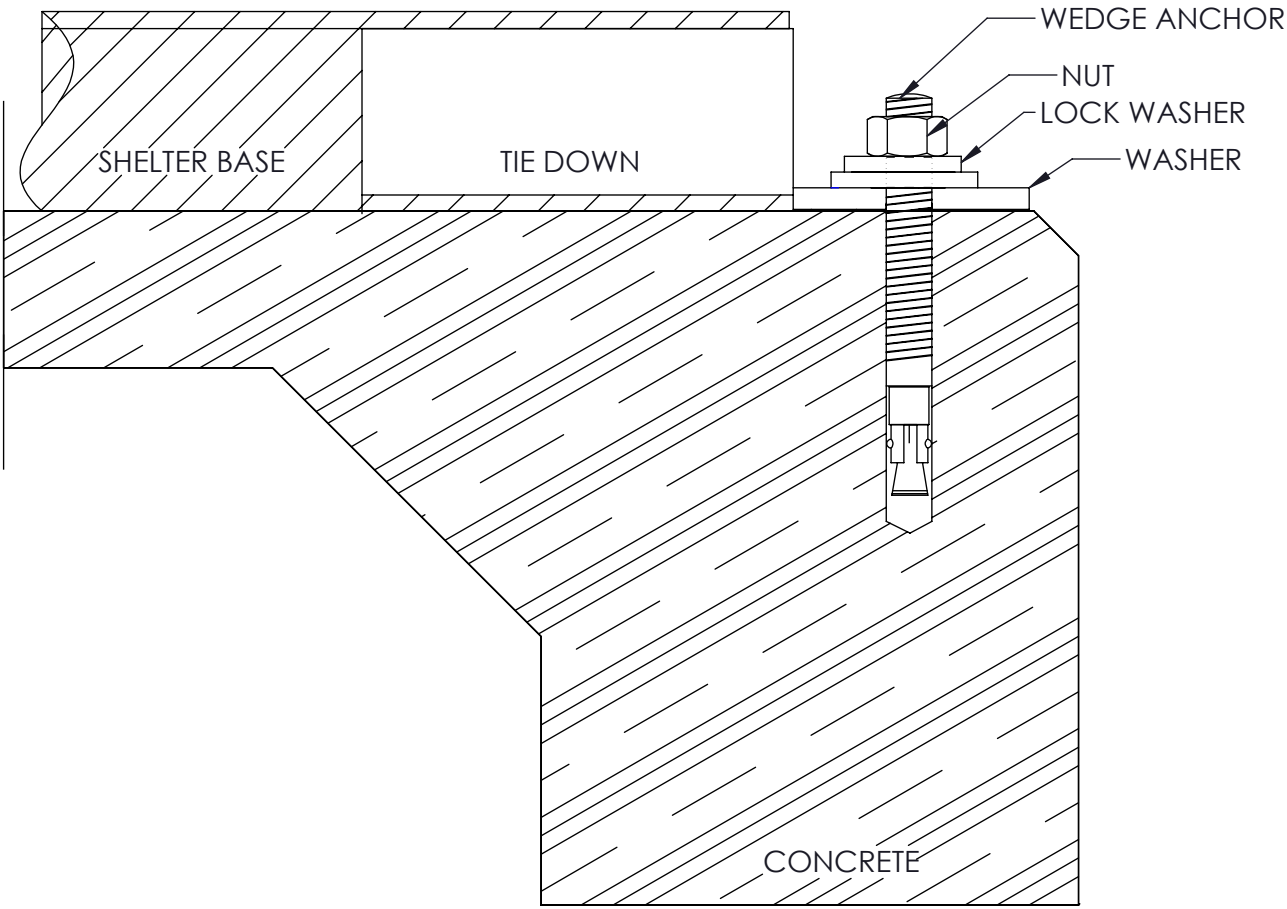
AMBIENT AIR MONITORING SHELTER

SIZE D DWG. NO. 25-6459

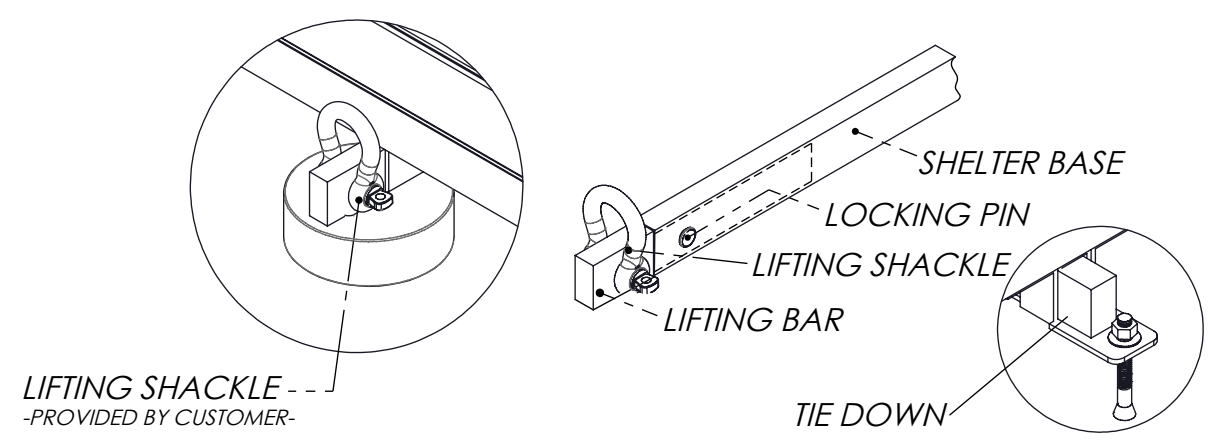




- TYPICAL TIE DOWN HARDWARE PER POINT**  
(TIE DOWN HARDWARE BY INSTALLERS)
1. (1) 3/4" WEDGE ANCHOR
  2. (1) 3/4" HEAVY HEX NUT
  3. (1) 3/4" SPLIT LOCK WASHER
  4. (1) 3/4" WASHER



**SHACKLE INFORMATION:**  
CROSBY 7/8" NOMINAL  
PART#1018525



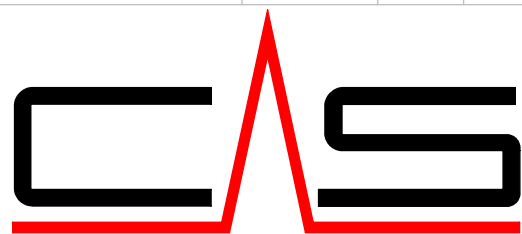

(DRAWING NOT TO SCALE)

FOR CONCRETE INSTALLATION - TYPICAL USE WITH 3/4 WEDGE ANCHORS  
FOR GROUND INSTALLATION - USE WITH GROUND ANCHORS  
CUSTOMER TO PROVIDE ALL ANCHORING TO PLATFORM

NOTE: CLIENT WILL NEED TO PERFORM AN ENGINEERING EVALUATION TO  
DETERMINE COMPLIANCE OF ALL APPLICABLE CODES

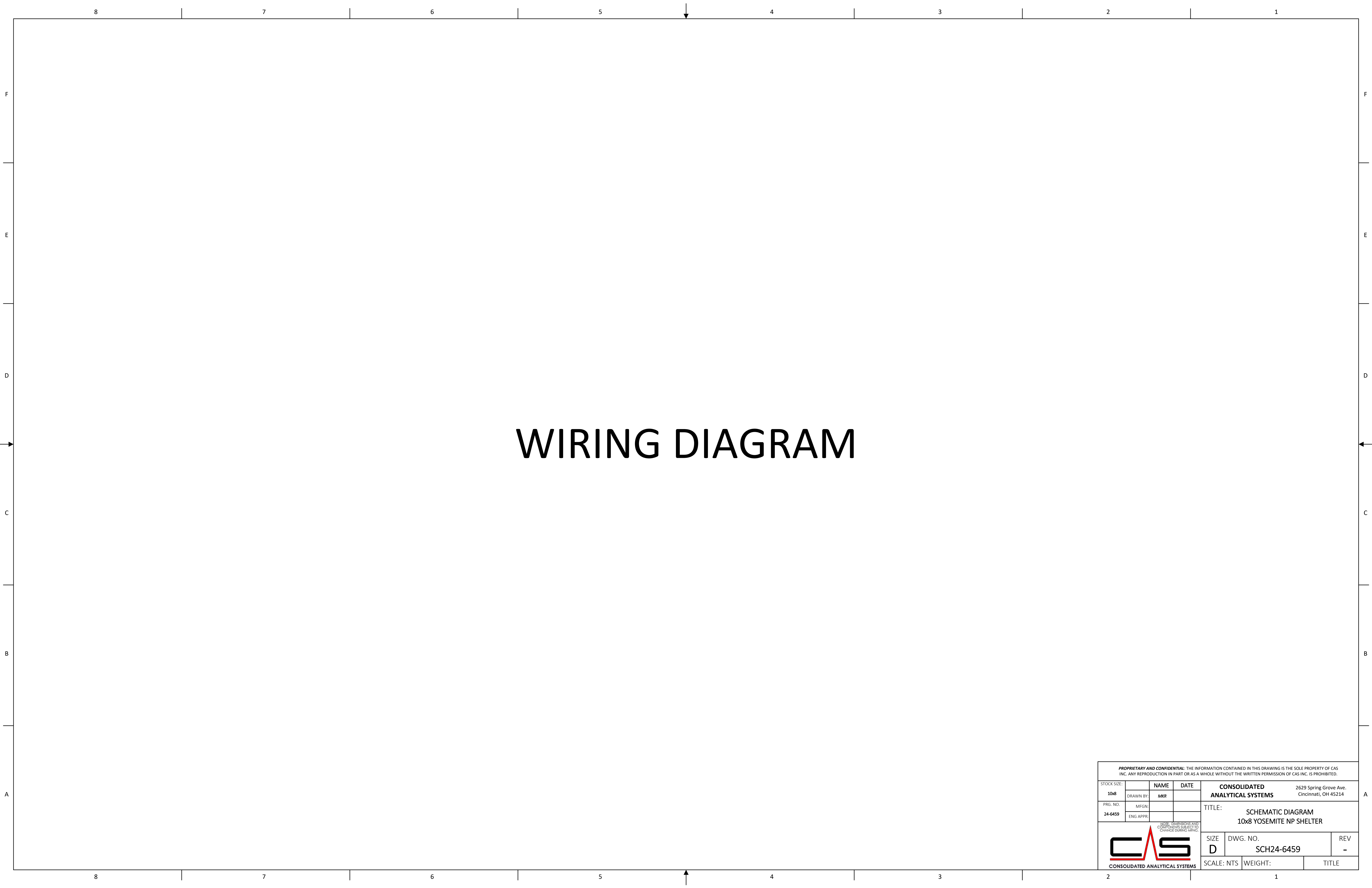
**PROPRIETARY AND CONFIDENTIAL:** THE INFORMATION CONTAINED IN THIS DRAWING IS THE SOLE PROPERTY OF CAS INC. ANY REPRODUCTION IN PART OR AS A WHOLE WITHOUT THE WRITTEN PERMISSION OF CAS INC. IS PROHIBITED.

STOCK SIZE: 10x8	NAME: RTL	DATE: 2/13/2025	<b>CONSOLIDATED ANALYTICAL SYSTEMS</b>		2629 Spring Grove ave, Cincinnati, OH 45214
	DRAWN: P.J.M.		TITLE:		
	MFNG. ENG.				



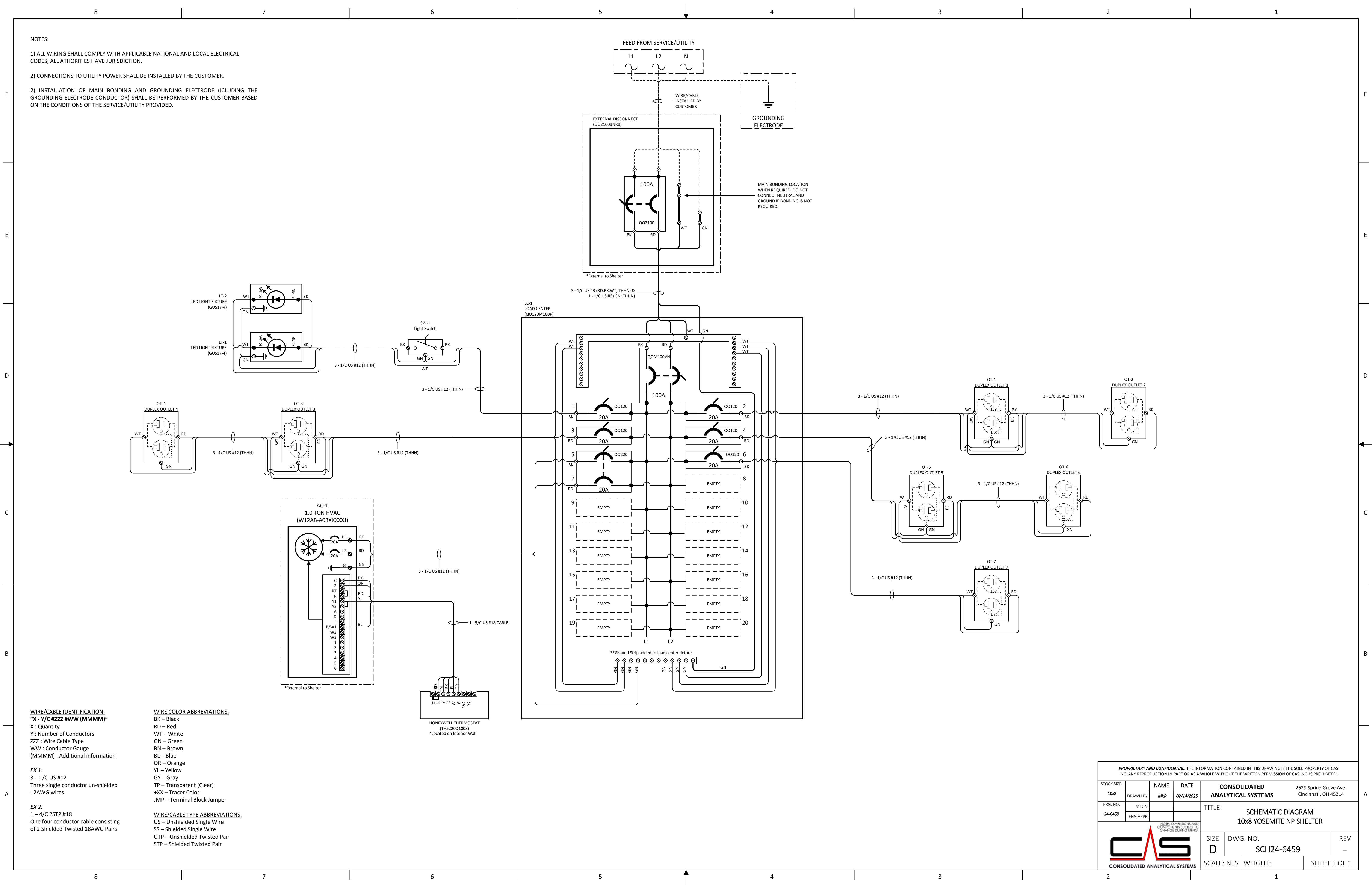
CONSOLIDATED ANALYTICAL SYSTEMS

<b>AIR RESOURCE</b>		<b>REV B</b>
BASE DETAIL		
SIZE: D	DWG. NO. 25-6459	
SCALE: 1:12	WEIGHT:	SHEET 5 OF 5



PROPRIETARY AND CONFIDENTIAL: THE INFORMATION CONTAINED IN THIS DRAWING IS THE SOLE PROPERTY OF CAS INC. ANY REPRODUCTION IN PART OR AS A WHOLE WITHOUT THE WRITTEN PERMISSION OF CAS INC. IS PROHIBITED.						
STOCK SIZE:		NAME	DATE	CONSOLIDATED ANALYTICAL SYSTEMS 2629 Spring Grove Ave. Cincinnati, OH 45214		
10x8	DRAWN BY:	MMR				
PRG. NO.	MFGN:			TITLE:		
24-6459	ENG APPR:			SCHEMATIC DIAGRAM 10x8 YOSEMITE NP SHELTER		
				SIZE	DWG. NO.	REV
				D	SCH24-6459	-
				SCALE: NTS	WEIGHT:	TITLE





NOTES:

- 1) ALL WIRING SHALL COMPLY WITH APPLICABLE NATIONAL AND LOCAL ELECTRICAL CODES; ALL ATTHORITIES HAVE JURISDICTION.
- 2) CONNECTIONS TO UTILITY POWER SHALL BE INSTALLED BY THE CUSTOMER.
- 2) INSTALLATION OF MAIN BONDING AND GROUNDING ELECTRODE (ICLUDING THE GROUNDING ELECTRODE CONDUCTOR) SHALL BE PERFORMED BY THE CUSTOMER BASED ON THE CONDITIONS OF THE SERVICE/UTILITY PROVIDED.

**WIRE/CABLE IDENTIFICATION:**  
"X - Y/C #ZZZ #WW (MMMM)"  
X : Quantity  
Y : Number of Conductors  
ZZZ : Wire Cable Type  
WW : Conductor Gauge  
(MMMM) : Additional information

**EX 1:**  
3 - 1/C US #12  
Three single conductor un-shielded 12AWG wires.

**EX 2:**  
1 - 4/C 2STP #18  
One four conductor cable consisting of 2 Shielded Twisted 18AWG Pairs

**WIRE COLOR ABBREVIATIONS:**  
BK - Black  
RD - Red  
WT - White  
GN - Green  
BN - Brown  
BL - Blue  
OR - Orange  
YL - Yellow  
GY - Gray  
TP - Transparent (Clear)  
+XX - Tracer Color  
JMP - Terminal Block Jumper

**WIRE/CABLE TYPE ABBREVIATIONS:**  
US - Unshielded Single Wire  
SS - Shielded Single Wire  
UTP - Unshielded Twisted Pair  
STP - Shielded Twisted Pair

PROPRIETARY AND CONFIDENTIAL: THE INFORMATION CONTAINED IN THIS DRAWING IS THE SOLE PROPERTY OF CAS INC. ANY REPRODUCTION IN PART OR AS A WHOLE WITHOUT THE WRITTEN PERMISSION OF CAS INC. IS PROHIBITED.					
STOCK SIZE:	10x8	NAME	DATE	CONSOLIDATED ANALYTICAL SYSTEMS	
PRG. NO.	24-6459	DRAWN BY: MKR	02/24/2025	2629 Spring Grove Ave. Cincinnati, OH 45214	
ENG APPR:				TITLE: SCHEMATIC DIAGRAM 10x8 YOSEMITE NP SHELTER	
SCALE: NTS		DWG. NO. SCH24-6459		REV -	
WEIGHT:		SHEET 1 OF 1			